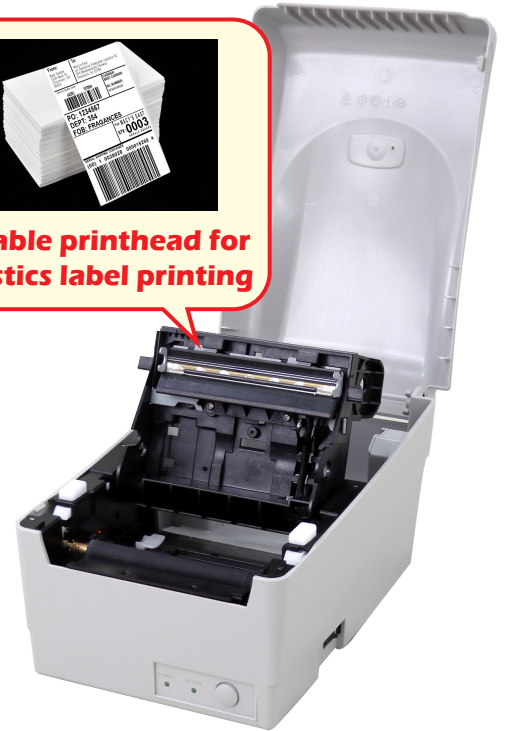


4-inch direct thermal desktop printer

OS-214D



Durable printhead for logistics label printing



The best value entry level desktop printer



The OS series are Argox best-selling printer for 23 years. With more than two million users in worldwide, the OS series are known internationally for their stability and durability.

Application



Retail





Logistics

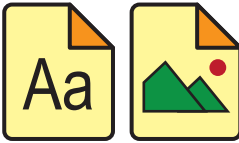




Manufacturing




Product features



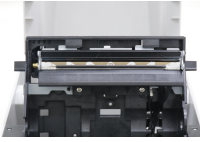
Increased memory

OS-214D memory is four times larger than OS-2140D, which can store more fonts and graphics with increased memory.




High printing speed

OS-214D in the printing speed is 20% faster than old OS-2140D, the maximum speed can reach up to 6ips.



Durable printhead

New printhead has high stability and quality, also is more durable than old OS-2140D.



Multiple Interfaces

Not only keeps the old OS-2140D default interface RS-232, USB device, but also increase Ethernet, USB host to fit into various applications.

General Specifications

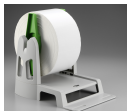
Print Specifications		OS-214D
Printing Method	Direct Thermal	
Printing Resolution	203 dpi(8 dots/mm)	
Printing Speed	Max. 6 ips(152.4mm/s)	
Printing Length	Max. 100"(2540 mm)	
Printing Width	Max. 4.25"(108 mm)	
Memory	32 MB SDRAM, 16MB Flash ROM	
CPU Type	32 bit RISC microprocessor	
Consumables Specifications		
Sensors	Reflective sensor x 1	
Media Type	Direct thermal label or plain paper	
Media	Max. width: 4.3" (110mm). Min. width: 0.8" (20mm). Thickness: 0.0025"~0.01" (0.0635mm~0.254mm) Max roll capacity (OD): 5" (127mm) Core size: 0.5" (12.7mm) Max roll capacity (OD): 5" (127mm) Core size: 1" (25.4mm) Max roll capacity (OD): 5" (127mm) Core size: 1.5" (38.1mm)	
Fonts & Symbologies		
Fonts	Internal character sets standard 5 alpha-numeric fonts from 0.049"H ~ 0.23" H (1.25mm ~ 6.0mm) All fonts are expandable up to 24x24 pixels 4 direction 0~270 rotation Soft fonts are downloadable (up to 72 points)	
1D Barcodes	UPC-A, UPC-E, JAN/EAN, CODE39, CODE93, CODE128, GS1-128 (UCC/EAN128), CODABAR (NW-7), ITF, Industrial 2of5, MSI, UPCadd-on code, POSTNET, GS1 DataBar Omnidirectional, GS1 DataBar Truncated, GS1 DataBar Stacked, GS1 DataBar Stacked Omnidirectional, GS1DataBar Limited, GS1 DataBar Expanded, GS1DataBar Expanded Stacked	
2D Barcodes	QR Code, PDF417 (including MicroPDF), DataMatrix (ECC200), GS1 DataMatrix, MaxiCode	
Graphics	PPLA: PCX, BMP, IMG, HEX,GDI PPLB: PCX, BMP, Binary raster, GDI PPLZ: GRF, Hex, GDI	
Emulation	PPLA, PPLB, PPLZ	
Interface Characteristics and Integration		
Operation Interface	LED Indicator x 2, Botton(Feed) x 1	
Communication Interface	Ethernet, USB device, RS-232, USB host	
Drivers	Windows Driver for Windows Vista/Win7/Win8/Win10, LINUX Driver, macOS Driver, Raspberry Pi Driver	
Software	BarTender, Printer Tool, Font Utility	
Application	iLabelPrint	
Database Link	Argobar Pro support ODBC Database Connection: Excel, CSV, MS Access, MS SQL, Oracle MySQL, dBASE (*.dbf)	
Operating & Environment Characteristics		
Power Source	Universal Switching Power supply. AC input voltage: 100~240V, 50~60Hz. DC Output: 24V, 2.5A	
Operation Environment	Operation Temperature: 40°F~100°F (4°C~38°C), 0% ~ 90% non-condensing, Storage Temperature: -4°F~122°F (-20°C~50°C)	
Agency Listing	CE, FCC, cULus, CCC, RoHS	
Physical Characteristics		
Printer Dimensions	W 182.5mm x H 173.5mm x D 282mm	
Printer Weight	3.3 lbs (1.51kgs)	

*Argox reserves the right to enhance and modify the specification without prior notice.
Please check Argox sales representative for most updated specifications.

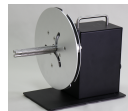
Optional Items



Cutter



External media stand



Label rewinder



Consult your local Argox business partners for location and contacts.



Argox Information Co., Ltd.

8F., No. 28, Baogao Rd., Xindian Dist., New Taipei City 231029, Taiwan (R.O.C.)
Tel: +886-2-8912-1121 Fax: +886-2-8912-1124 <https://www.argo.com> <https://www.youtube.com/user/argoxmkt> email: service@argox.com
Copyright © 2023. Argox Information Co., Ltd. All Rights Reserved.